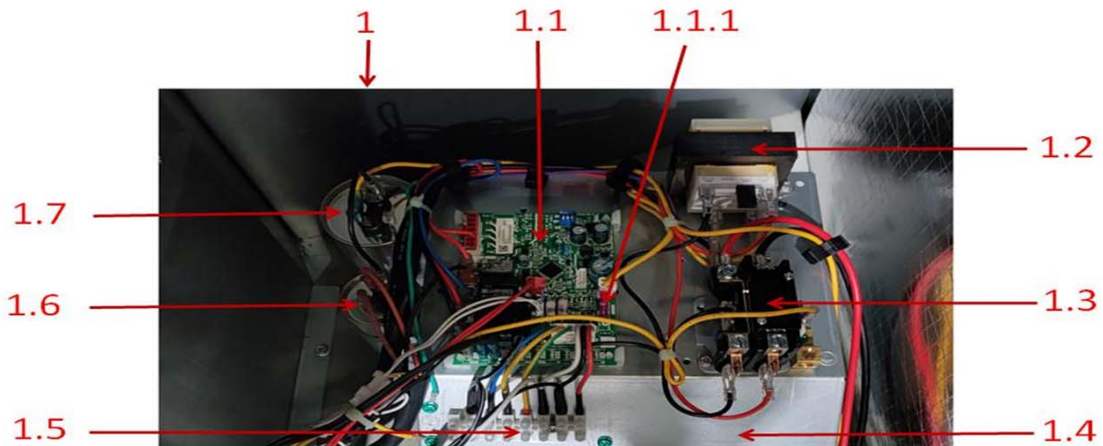
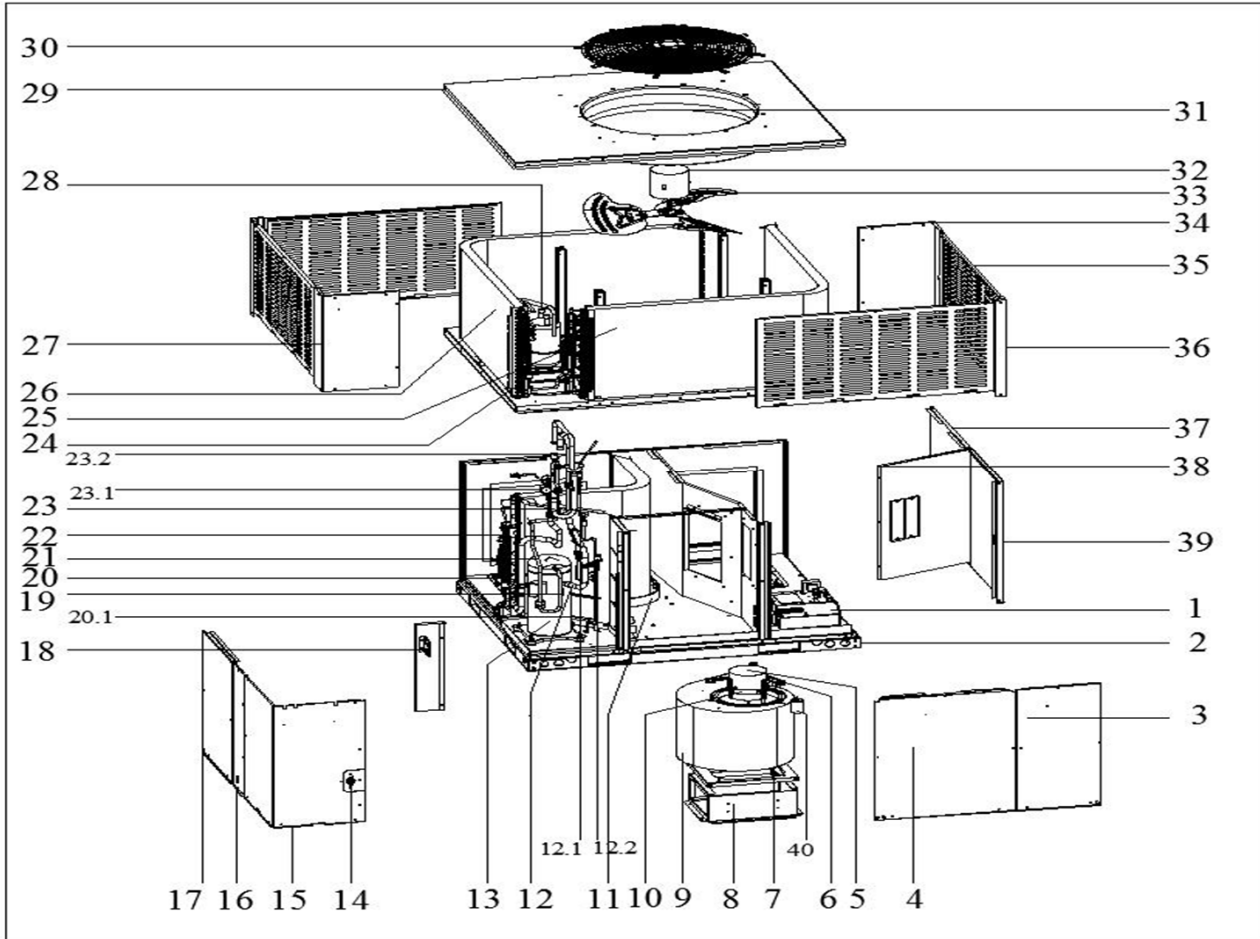
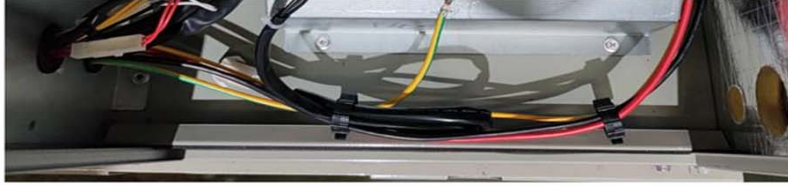


# Exploded View

MRD-48HWN1-M134L





EX_ID	Spare Parts Code	Part Name(EN)	Qty.
1	1722770000959	E-part box assembly	1
1.1	1712770000966	Main control board assembly	1
1.1.1	11203001001353	Fuse	1
1.2	11203103000194	Linear Transformer	1
1.3	11203502000032	AC contactor	1
1.4	12227700006629	Electrical appliance mounting plate assembly	1
1.5	17400401000196	Wire joint, 8P	1
1.6	17400103000151	Capacitor	1
1.7	17400103000133	Capacitor	1
2	12227700A06800	Chassis part	1
3	12227700A07185	Internal panel assembly	1
4	12227700A06821	Internal panel assembly	1
6	12223000001932	Supporter subassembly of fan motor	3
7	12227700006164	Wind wheel fixed plate	1
8	12227700006171	Fan support board	1
9	12200101000213	Wind turbine parts	1
10	12223000001992	Supporter of fan motor	1
11	12127700000097	Drainage pan assembly	1
12	15427700002011	Suction pipe assembly	1
12.1	15427000001439	Fusible plug assembly	1
12.2	17400516000089	Pressure switch	1
13	11102010000411	Fixed Speed Scroll compressor	1
14	11201007000025	Room Temperature Sensor	1
15	12227700A06838	Panel	1
16	12227700A06826	Column assembly	1
17	12227700A06846	Internal panel assembly	1
18	12227700006185	Installation board	1
19	17400513000070	Discharge Temp. sensor	1
20	15427700001995	Throttle assembly	1
20.1	15500210004110	Throttle	1
21	15427700001991	Air discharge pipe assembly	1
22	15827700001189	Evaporator assembly	1
23	15427700002010	Four-way valve assembly	1
23.1	15500216000084	4-way valve	1
23.2	17400516000101	Pressure switch	1
24	112010070000412	Pipe Temperature Sensor	1
25	15827700001048	B unit condenser assembly	1
26	15827700001028	B unit condenser assembly	1
27	12227700A06980	Column assembly	1
28	15500508000082	Accumulator cylinder	1
29	12227700010181	Top cover welding assembly	1
30	12927700000301	protection net	1
32	11002012028483	Single Phase Asynchronous Motor	1
33	12200104000122	Axial fan	1
34	12227700A06825	Column	1
35	12227700A06843	Protective plate assembly	4
36	12227700006169	Column	2
37	12227700A07189	Internal panel assembly	1
38	12227700006260	Circuit board assembly duct	1
39	12227700A07182	Column assembly	1
40	17400103000149	Capacitor of compressor	1