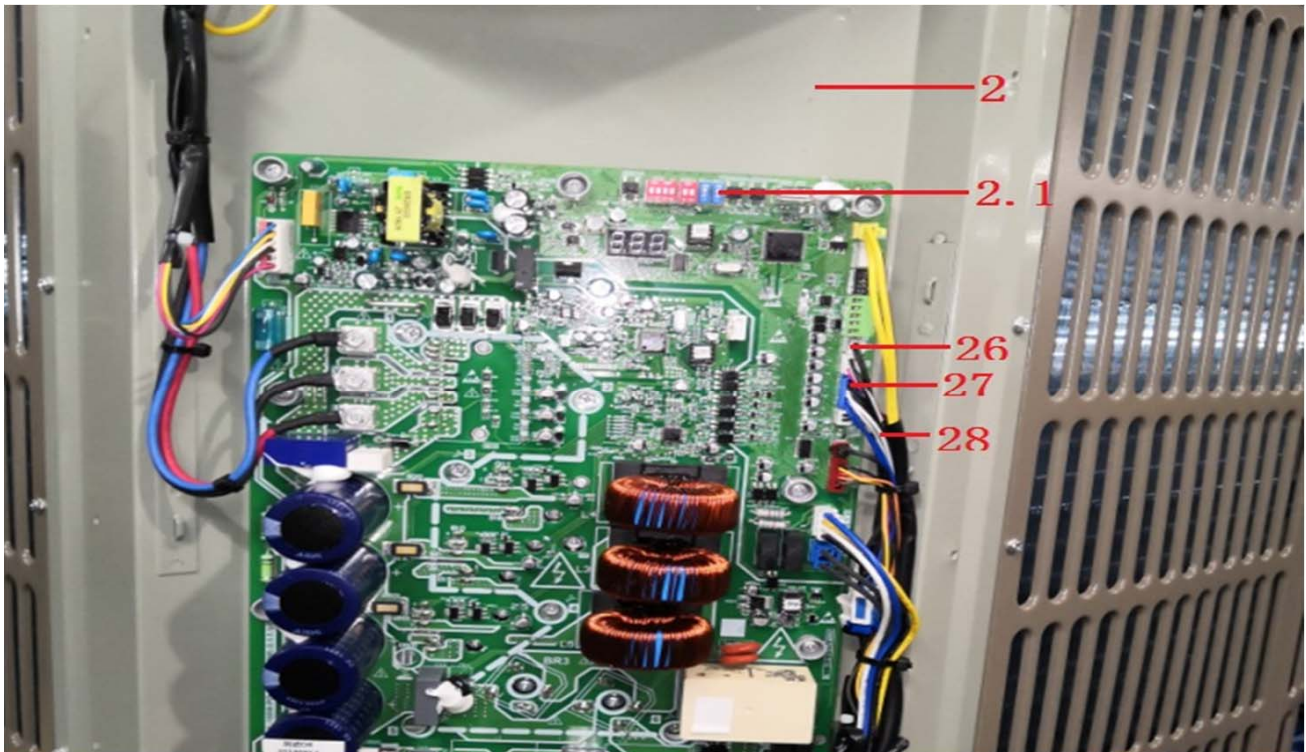
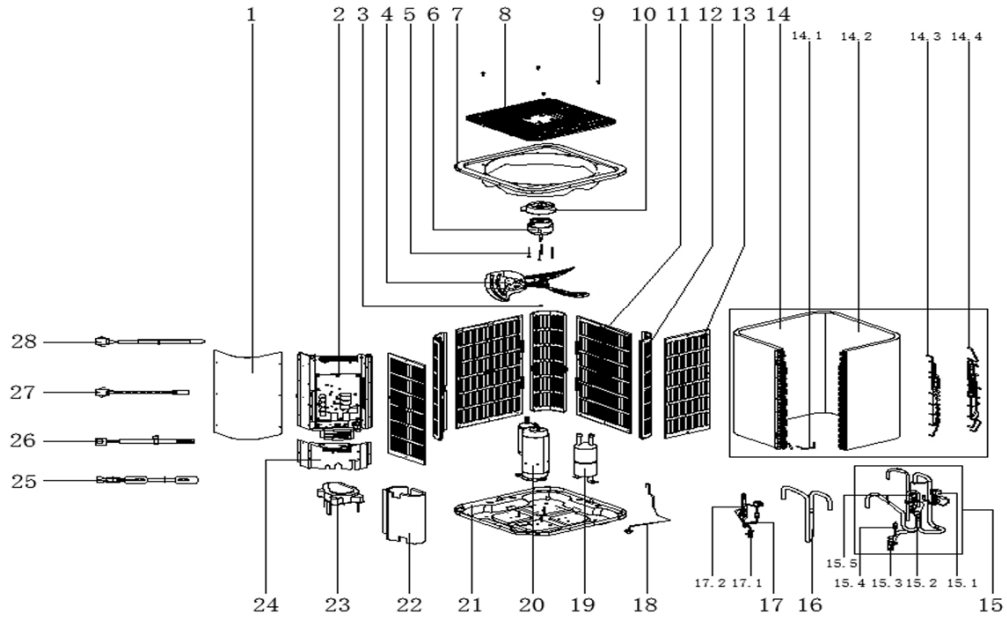
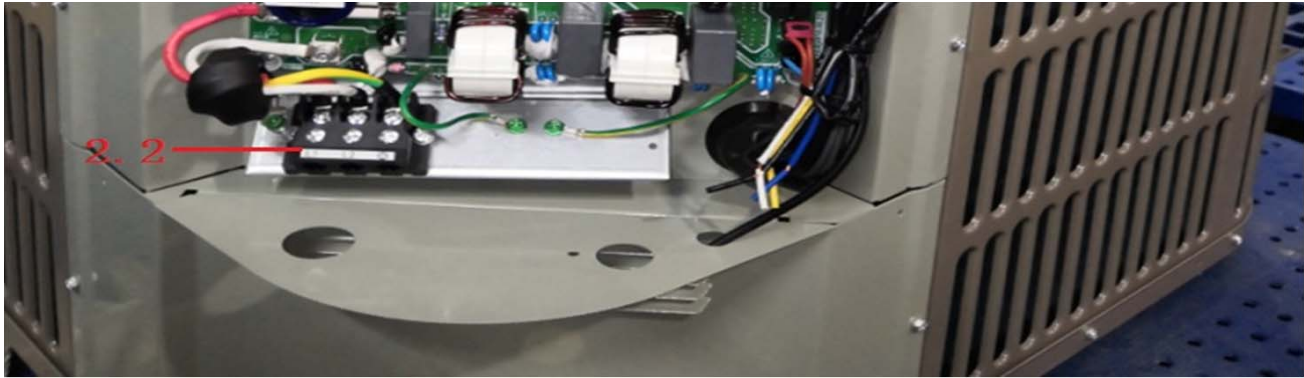


Exploded View

(Product model) : 22023016002691
(Customer No) : G0001615
(Customer model) : MOV6-60HDN1-M18M
(Order Product Code) : 62249-J1766505





EX_ID	Spare Parts Code	Part Name(EN)	Remark2	Replace Type
1	12223000011788	Side panel assembly		
2	17223000006861	E-part box assembly		
2.1	17123000006537	Module board assembly		17123000008060
2.2	17400401003296	Wire joint		
3	11301512000143	Nut		
4	12200104000038	Fan		
5	11301805000012	Motor Mounting bolt		
6	11002015009345	Brushless DC Motor		
7	12223000003785	Top cover ass'y		
8	12923000000032	Top cover veil		
9	11301002000074	Bolt and washer assembly		
10	12123000000464	Motor installation board ass'y		
11	12223000004187	Side board ass'y		
12	12223100000247	Support Plate		
13	12223000004129	Clapboard ass'y 2		
14	15823000005495	Condenser ass'y		
14.1	15123000002539	Evaporator connection pipe assembly		
14.2	15823000000768	Condenser		
14.3	15123000012127	Condenser input pipe assembly		
14.4	15423000000966	Condenser outlet pie ass'y		
15	15423000005098	4-way valve ass'y		
15.1	15500205000034	Solenoid valve ass'y		
15.2	15500216001603	4-way valve ass'y		
15.3	15500206000017	Block valve		
15.4	11201008000573	Pressure sensor		
15.5	17400516000077	Pressure switch		
16	15123000011875	Suction pipe assembly		
17	15423000000964	High-pressure valve ass'y		
17.1	15500206000018	Block valve		
17.2	155002130000911	Electronic Expansion Valve Suite		
18	15123000011868	Pipe joint ass'y		
19	15500501000117	Seporator		
20	11103020000218	DC Inverter Rotary Compressor		
21	12223000002440	Chassis Parts		
22	12400301000372	Acoustic Insulation Cotton		
23	12600901000103	Rubber Cap		
24	12223000011575	Rear clapboard ass'y		
25	17402001000040	Compressor electric heater		
26	11201007001640	Discharge Temperature Sensor	T5	
27	11201007000136	Pipe Temperature Sensor	T3	11201007000113
28	11201007003026	Room Temperature Sensor	T4	11201007002020